

STEM characterization on silica nanowires with new mesopore structures by space-confined self-assembly within nano-scale channels

Q1

Peng Lai, Michael Z. Hu, Donglu Shi and Douglas Blom

“Critical” channel diameters were found in the study of space-confined coassemblies and a new mesopore structure was observed in silica nanowires formed in AAO channels with diameters from 30 to 80 nm.

Please check this proof carefully. **Our staff will not read it in detail after you have returned it.** Translation errors between word-processor files and typesetting systems can occur so the whole proof needs to be read. Please pay particular attention to: tabulated material; equations; numerical data; figures and graphics; and references. If you have not already indicated the corresponding author(s) please mark their name(s) with an asterisk. Please e-mail a list of corrections or the PDF with electronic notes attached -- do not change the text within the PDF file or send a revised manuscript.

Please bear in mind that minor layout improvements, e.g. in line breaking, table widths and graphic placement, are routinely applied to the final version.

Please note that, in the typefaces we use, an italic vee looks like this: ν , and a Greek nu looks like this: ν .

We will publish articles on the web as soon as possible after receiving your corrections; **no late corrections will be made.**

Please return your **final** corrections, where possible within **48 hours** of receipt, by e-mail to: proofs@rsc.org

Reprints—Electronic (PDF) reprints will be provided free of charge to the corresponding author. Enquiries about purchasing paper reprints should be addressed via: <http://www.rsc.org/Publishing/ReSource/PaperReprints/>. Costs for reprints are below:

Reprint costs		
No of pages	Cost for 50 copies	Cost for each additional 50 copies
2-4	£180	£115
5-8	£300	£230
9-20	£600	£480
21-40	£1100	£870
>40	£1700	£1455
<i>Cost for including cover of journal issue:</i> £50 per 50 copies		

Queries are marked on your proof like this Q1, Q2, etc. and for your convenience line numbers are indicated like this 5, 10, 15, ...

Query reference	Query	Remarks
Q1	For your information: You can cite this article before you receive notification of the page numbers by using the following format: (authors), (journal), (year), DOI: 10.1039/ (paper number).	

STEM characterization on silica nanowires with new mesopore structures by space-confined self-assembly within nano-scale channels†

Peng Lai,^{ab} Michael Z. Hu,^{*a} Donglu Shi^b and Douglas Blom^a

Received (in Cambridge, UK) 12th November 2007, Accepted 17th December 2007

First published as an Advance Article on the web

DOI: 10.1039/b717461f

“Critical” channel diameters were found (below which space confinement takes effect, leading to more uniform and ordered mesopore structures) in the study of evaporation-induced co-assembly of triblock-copolymer (P123) and silica molecular precursors (TEOS, tetraethyl orthosilicate) by employing channels in anodized aluminum oxide (AAO, 13–200 nm channel diameter) and in track-etched polycarbonate (EPC, 10–80 nm channel diameter) and for the first time we have observed a new mesopore structure (i.e., packed hollow spheres) in silica nanowires formed in AAO channels with diameters from 30 to 80 nm.

Ordered mesoporous silica nanomaterials are of particular interests for both fundamental study of nanostructures and a wide range of applications such as catalysis, adsorption, molecular separation, and as templates for producing other types of inorganic nanomaterials.^{1,2} Since the discovery of Mobile Crystalline Materials 41 (MCM-41) in 1992,³ extensive research has been focused on the synthesis of ordered and orientated mesoporous materials *via* organic–inorganic self-assembly.^{4–12} The current studies on ordered mesoporous wires by organic–inorganic hybrid self-assembly were mainly targeted at inner channels of relatively large diameters of anodized aluminum oxide membrane (AAO) (120–200 nm)^{5–8} and track-etched polycarbonate (EPC) (400 nm).⁹ Two major intra-wire mesoporous structures by AAO channel confinement or no confinement were reported. These include: (1) the long axes of the cylindrical mesopores aligned with those of the AAO channels (columnar orientation), and (2) the cylindrical mesopores aligned in the axial direction to form a ring (circular orientation). Liang and Susha, by employing relatively large EPC channels of 400 nm, produced mesoporous wires of (PEO)₂₀(PPO)₇₀(PEO)₂₀ (P123)–silica hybrid.⁹ However, there have not been any studies on self-assembled nanowires, space-confined within EPC channels in the range of 10–80 nm. Wu *et al.*¹² recently reported on P123–silica hybrid self-assembled nanowires, space-confined within the narrower AAO channels (10–80 nm). Their experiments and computer simulation on intra-wire mesoporous structures showed that the silica nanowires (above 30 nm) exhibited coiled cylindrical geometry, and transformed to a spherical cage-like geometry (silica nanowires with diameter below 30 nm).

In this communication, we report scanning transmission electron microscopy (STEM) characterization results on new intra-wire mesoporous structures in silica nanowires by space-confined evaporation-induced self-assembly of mixed block-copolymer (P123) and inorganic precursor (tetraethyl orthosilicate, TEOS) within AAO and EPC channels (with diameters between 10 and 200 nm). The space-confined, self-assembled nanowires within relatively smaller nano-scale channels (10–80 nm) of EPC are studied and reported for the first time. A new intra-wire structure (packed hollow spheres) exists in silica nanowires, formed in AAO channels with diameters from 30 to 80 nm. We show that space confinement at the nanoscale can result in more uniform and ordered nanostructures in the silica nanowires. A “critical size” of the channel diameter (30 nm for AAO and 50 nm for EPC) exists, below which uniform and ordered intra-wire mesopore structures can be formed. However, above the critical size, mixed mesophases occur in the wire.

The substrate disc consisted of parallel mesopore channels, Fig. 1. The diameter of these channels was varied in a quite wide range from 10 to 200 nm. The precursor solutions were prepared as follows: TEOS was pre-hydrolyzed in diluted hydrochloric acid (pH 2) and ethanol solution for 10 min. Tri-block copolymer, P123, which was initially dissolved in ethanol, was added to the acidic TEOS solution. The mixture was stirred for 3 h at room temperature (~22 °C). The mass ratio of the final precursor solution was kept at 2.6 TEOS : 0.6875 P123 : 1.35 HCl solution (pH 2) : 5 EtOH. The precursor solution was loaded into AAO or EPC channels by vacuum impregnation with substrate disc submerged in the solution for 1 h at room temperature, and the loaded AAO or EPC membrane was subsequently air-dried in ambient condition overnight. As a result, hybrid P123–silica wires formed inside the substrate channels. The loaded specimen was then calcined to remove the P123 template and EPC substrates. The

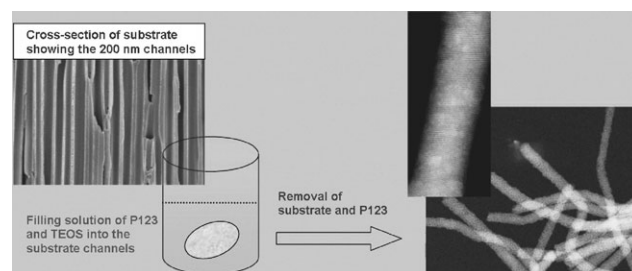


Fig. 1 Schematic diagram showing the space-confined silica-P123 hybrid self-assembly in channels of substrate-discs.

^a Oak Ridge National Laboratory, Oak Ridge, TN 37831, USA. E-mail: hum1@ornl.gov; Fax: 865 241 4826; Tel: 865 574 8782

^b Department of Chemical and Materials Engineering, University of Cincinnati, 2600 Clifton Ave., Cincinnati, Ohio 45221, USA

† Electronic supplementary information (ESI) available: Experimental section. See DOI: 10.1039/b717461f

1 AAO substrate was completely dissolved in 5 M HCl at 60 °C
for 1 h to obtain freely dispersed wires.

This paper reports our initial findings using EPC channels
as a nanoscale confinement “tool”. Mixed mesophases (2D
5 hexagonal, lamellar, worm-like, and amorphous) could co-
exist in silica nanowires in the 80 nm-EPC channels, however,
more than half of the mesostructures assumed a “worm-like”
structure, as shown in Fig. 2(a). A more uniform intra-wire
mesoporous structure with pseudo-hexagonal pattern exists in
10 the 50, 30 and 10 nm-EPC channels (Fig. 2(b), (c) and (d)),
with pore diameters 5.8 ± 1 nm, determined from the STEM
images by online software, ImageJ. In contrast to the wall
features of nanowires obtained from AAO channels (see later),
the outside walls of silica wires obtained from EPC substrate
15 are not smooth and pits are observed. As shown in Fig. 2, the
pore structure exhibits more uniform and ordered morphology
as they preferentially form in the narrower EPC channels (50,
30 and 10 nm), indicating a pronounced EPC channel confinement
on the mesophase formation in nanowires. Few
20 mixed mesophases were observed in wires with diameter less
than 50 nm.

Fig. 3 shows STEM images of silica nanowires in the AAO
substrate channels. In contrast to the case in EPC channels,
the nanowires in the AAO channels exhibit a uniform “hollow
25 spheres” structure. For channel diameters of 73 nm (Fig. 3(a))
and 55 nm (Fig. 3(b)), the pore structures tend to be less
ordered. As the channel diameter is reduced to 35 nm, a so-
called “coiled cylindrical” structure¹² is observed (see Fig.
3(c), for a single helix structure). Note that some of the
30 nanowires in Fig. 3(c) have only three rows of pores along
the wire direction. Further reduction of the channel diameter
to 13 nm (Fig. 3(d)) resulted in a pore structure with only one
row of “hollow spheres” in the silica nanowires. The average
pore diameter in wires obtained from the AAO channels below
35 the “critical size” is 10.7 nm, which is much larger than the
pore diameter (5.8 nm) in the wires obtained from the EPC.
Due to channel space confinement, only one row of mesopores

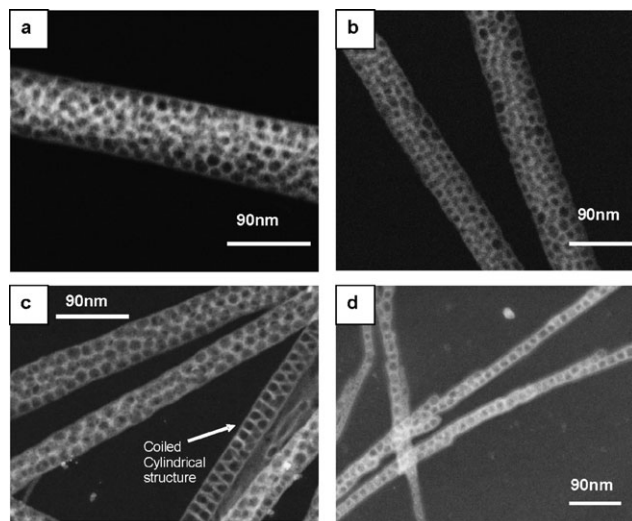


Fig. 3 Representative STEM images (Z-contrast mode) of side-views
of mesoporous silica wires formed in AAO channels with labeled
diameter (a) 73 nm; (b) 55 nm; (c) 35 nm; (d) 13 nm.

(~10.7 nm diameter) is allowed to organize in 13 nm AAO
channels.

A “channel wall effect” on the mesophase ordering was
experimentally observed in the wires obtained from 200 nm-
AAO substrate. As can be seen in Fig. 4(a), the mesopore
25 structure is preferentially more ordered in the vicinity of the
channel wall and becomes slightly disordered in the interior of
the nanowire. This might be due to the preferential concentra-
tion of block-copolymer P123 in the vicinity of the AAO wall
surface, indicating the possible mechanism that mesophase
ordering starts from the wall and grows further into the
30 interior. This suggests a similar growth mechanism of the
ordering as in the formation of mesostructured spherical
nanoparticles from evaporation-induced self-assembly with-
out nano-confinement.¹³ Fig. 4(b) shows a STEM image of a

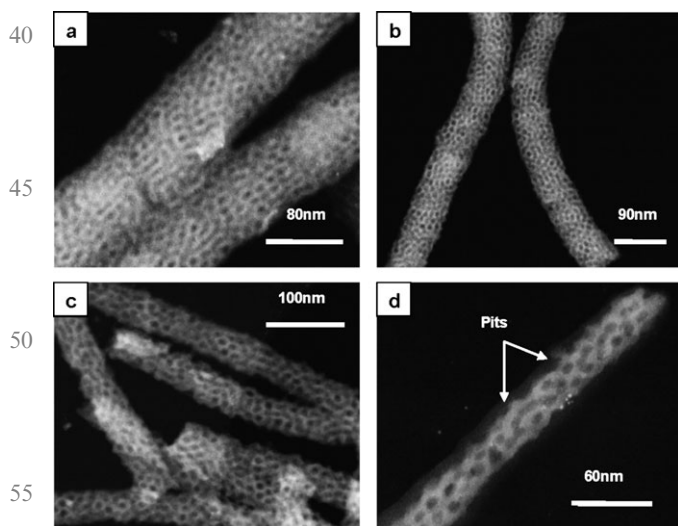


Fig. 2 Representative STEM images (Z-contrast mode) of side-views
of mesoporous silica wires formed in EPC channels with labeled
diameter (a) 80 nm; (b) 50 nm; (c) 30 nm; (d) 10 nm.

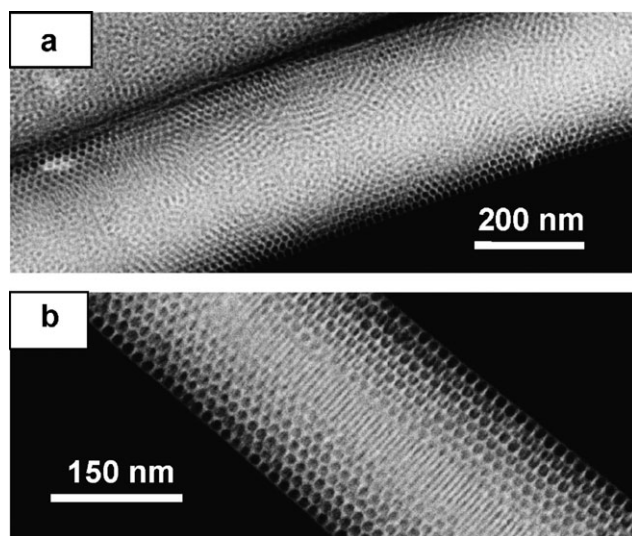


Fig. 4 The STEM image (Z-contrast mode) of silica wires formed in
200 nm AAO channels: (a) so-called edge-more-ordered intra-wire
structure; (b) completely ordered mesostructure.

1 completely ordered 2D hexagonal mesostructure within a
silica nanowire, which contains a circular channel structure
(*i.e.*, concentric rings of cylinders with diameter of 10.6 nm).

5 In conclusion, new mesopore structures (*i.e.*, worm-like
pseudo-hexagonal patterns and packed hollow spheres) within
silica nanowires have been observed for the first time due to
space-confined, self-assembly inside the channels of substrate
AAO (with diameter from 30 to 80 nm) and EPC (with
10 diameter from 10 to 80 nm). These structures exhibit distinc-
tively different features from all previously reported STEM
characterized experimental results in literature. In the P123-
silica system, the final inorganic nanostructure is determined
by the cooperative molecular self-assembly processes of the
structure-directing agent (P123), the space confinement, and
15 the type of substrate. For silica nanowires in both AAO and
EPC channels, uniform and ordered structures are obtained
only for channel sizes below a critical value. Above the critical
channel size, more disordered and mixed mesophase structures
co-exist.

20 This work is supported by the Division of Materials Science
(KC 02 03 01 0), Office of Science, the US Department of
Energy and also sponsored in part by the Assistant Secretary
for energy Efficiency and Renewable Energy, Office of Trans-
portation Technologies, as part of the High Temperature
25 Materials Laboratory, managed by UT-Battelle, LLC, for

the US Department of Energy under contract DE-AC05- 1
00OR22725.

Notes and references 5

- 1 C. Sanchez, B. Julian, P. Belleville and M. Popall, *J. Mater. Chem.*, 2005, **15**, 3559.
- 2 Y. Wu, T. Livneh, Y. X. Zhang, G. Cheng, J. Wang, J. Tang, M. Moskovites and G. D. Stucky, *Nano Lett.*, 2004, **4**, 2337.
- 3 C. T. Kresge, M. E. Leonowicz, W. J. Roth, J. C. Vartuli and J. S. Beck, *Nature*, 1992, **359**, 710.
- 4 C. G. Göltner and M. Antonietti, *Adv. Mater.*, 1997, **9**, 431.
- 5 G. Kickelbick, *Small*, 2005, **1**, 168.
- 6 A. Y. Ku, S. T. Taylor and S. M. Loureiro, *J. Am. Chem. Soc.*, 2005, **127**, 6934.
- 7 B. Platschek, N. Petkov and T. Bein, *Angew. Chem., Int. Ed.*, 2006, **45**, 1134.
- 8 B. Yao, D. Fleming, M. A. Morris and S. E. Lawrence, *Chem. Mater.*, 2004, **16**, 4851.
- 9 Z. Liang and A. S. Susha, *Chem.–Eur. J.*, 2004, **10**, 4910.
- 10 J. Wang, C. K. Tsung, R. C. Hayward, Y. Wu and G. D. Stucky, *Angew. Chem.*, 2005, **117**, 336.
- 11 J. Wang, J. Zhang, B. Y. Asoo and G. D. Stucky, *J. Am. Chem. Soc.*, 2003, **125**, 13966.
- 12 Y. Wu, G. Cheng, K. Katsov, S. W. Sides, J. Wang, J. Tang, G. H. Fredrickson, M. Moskovits and G. D. Stucky, *Nat. Mater.*, 2004, **3**, 816.
- 13 Y. Lu, H. Fan, A. Stump, T. L. Ward, T. Rieker and C. J. Brinker, *Nature*, 1999, **398**, 223.